



What is a network encroachment?

A network encroachment is any structure or activity that intrudes, or has the potential to intrude, within safe clearance distances of our electricity network.

Our network includes, but is not limited to infrastructure such as powerlines (wires), power poles, stays, substations, underground powerlines, switching stations, ground mounted transformers, pillars and streetlights.

Encroachments can cause serious safety risks and limit access for our crews to complete important maintenance and repair work or to restore power following an outage.

Identifying a network encroachment

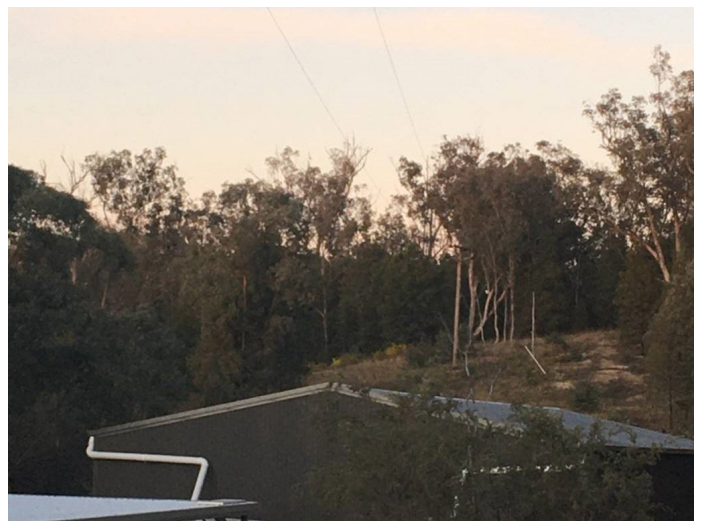
The examples below would be considered an encroachment:

- A shed or liveable structure close to a pole or overhead wires
- A structure or gardens close to a ground mounted substation
- A farm dam built under the overhead powerlines and reducing ground clearances
- Agricultural netting built under and around our poles.

If a development is constructed or an activity undertaken within safety distances and is deemed an encroachment these will need to be relocated or removed. Alternatively, subject to our approval, the landowner may elect to relocate our infrastructure at their cost (including acquisition of new easements).

Contact us about a network encroachment

If you believe you have a network encroachment, please immediately notify us by calling **13 23 91** and we will work with you to identify a safe solution.



SAFETY FIRST

- Contact Essential Energy on **13 23 91** at the planning stage of any construction or removal activity for safety advice
- You can still be injured without directly contacting an overhead powerline, as electricity can arc across open spaces - so keep your distance
- Never approach a fallen powerline, they can remain alive, even when laying across the ground
- If you are unsure of the height and voltage of power lines contact Essential Energy for more information.

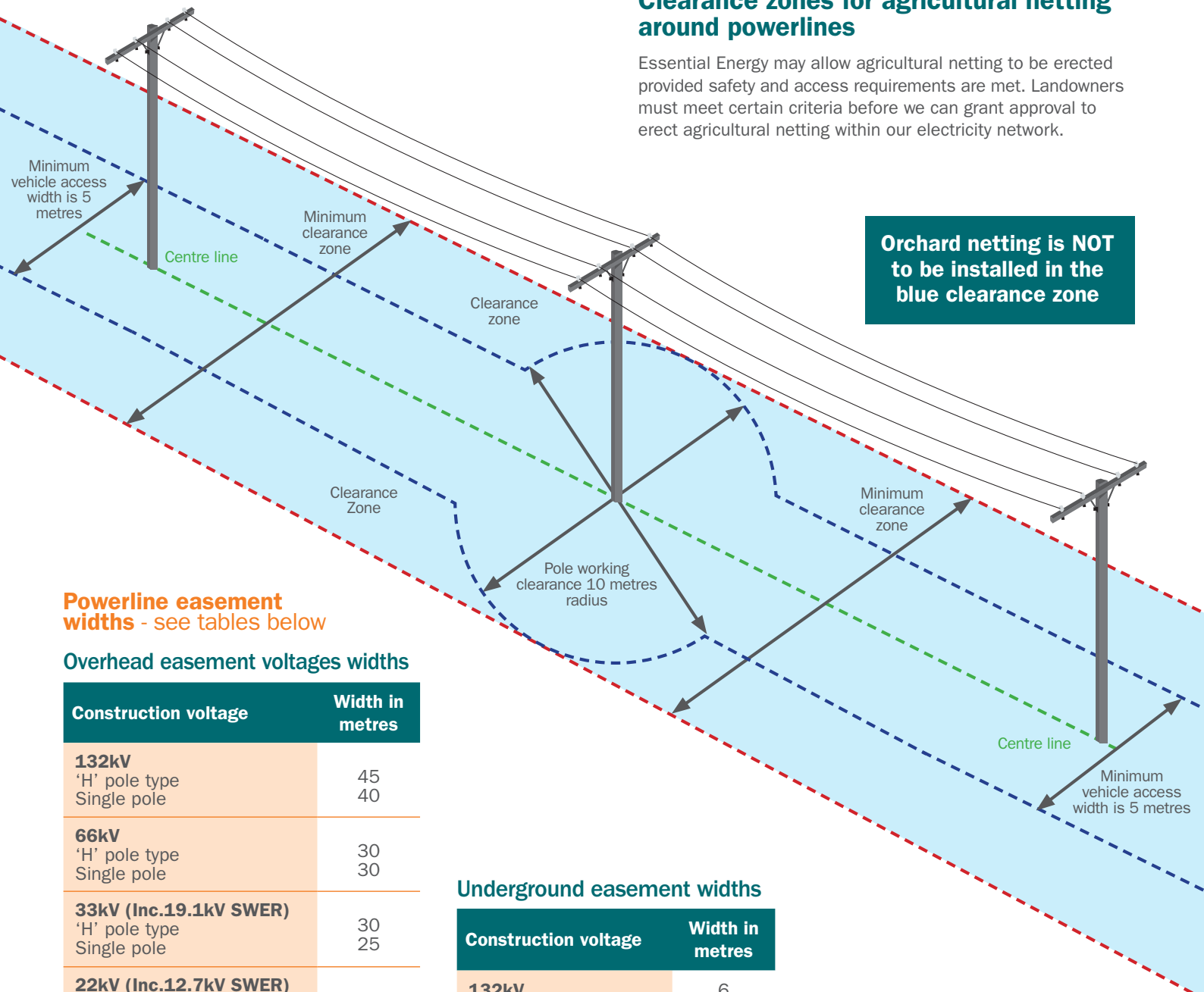
Agricultural netting around powerlines



Clearance zones for agricultural netting around powerlines

Essential Energy may allow agricultural netting to be erected provided safety and access requirements are met. Landowners must meet certain criteria before we can grant approval to erect agricultural netting within our electricity network.

Orchard netting is NOT to be installed in the blue clearance zone



Powerline easement widths - see tables below

Overhead easement voltages widths

Construction voltage	Width in metres
132kV 'H' pole type Single pole	45 40
66kV 'H' pole type Single pole	30 30
33kV (Inc.19.1kV SWER) 'H' pole type Single pole	30 25
22kV (Inc.12.7kV SWER) Bare wire CCT ABC	20 20 15
11kV Bare wire CCT ABC	20 20 15
Low voltage Bare wire ABC	15 10

Underground easement widths

Construction voltage	Width in metres
132kV	6
66kV	6
33kV (Subtransmission)	6
33kV (Distribution)	2
22kV	2
11kV	2
Low voltage	1

Low voltage service widths

Construction voltage	Width in metres
Overhead Insulated Long Span Short Span	10 5
Underground	1

For further information on agricultural netting around powerlines and how to apply for approval, please visit essentialenergy.com.au/our-network/encroachments or call 13 23 91.