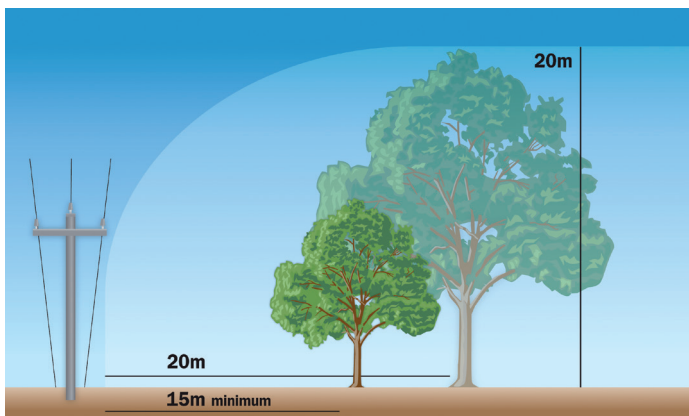


Essential Energy's Planting Guide



Plant a tree no closer to powerlines than 15 metres OR a distance equal to its mature height – whichever is greater

Planting tips

- Look up before you plant
- Consider how big the tree or vegetation will grow and what will be affected
- Plant taller varieties furthest away from the powerlines using the planting guide above
- Do not plant on the streets without local council approval
- Remember that access to powerlines is required for future maintenance and repairs
- Select plant species that are native to your area
- Avoid plant species that could invade the surrounding environment
- Plant away from the underground pits, pillar boxes and padmount transformers to avoid root problems
- Consult a local nursery before planting
- Tall growing species including the trees shown in the table over the page are unsuitable under or near powerlines.

Trees unsuitable for planting under powerlines

The majority of trees are unsuitable for planting under or near powerlines due to the dangers involved and insufficient room for the tree to grow. The table opposite provides a list of some common species that are unsuitable under or near powerlines.



Scan QR code to learn more.
More information on how and why Essential Energy manages vegetation near powerlines can also be found at essentialenergy.com.au/trees

Unsuitable for planting near powerlines	
Botanical Name	Common Name
Acacia species (large)	Wattle
Acer species	Maples (not Japanese)
Acmena species (large)	Lilly Pilly or Bush Cherry
Alnus species	Black and Evergreen Alder
Araucaria species	Bunya-Bunya, Hoop or Norfolk Island Pine
Bambusa species	Bamboo
Banksia species (large)	Banksia
Betula species	Birch
Brachychiton species	Lace-Bark, Flame and Kurrajong
Caesalpinia ferrea	Leopard tree
Casuarina species	She-Oak
Cedrus species	Cedar, also Fir and Spruce
Celtis species	Nettle tree
Cinnamomum camphora	Camphor Laurel
Cupressus species	Cypress trees
Delonix regia	Poinciana or Flamboyant
Erythrina species	Coral tree
Eucalyptus species	Gum tree
Ficus species	Fig tree
Fraxinus species	Ash
Gleditsia species	Honey Locust
Grevillea robusta	Silky Oak
Hymenosporum flavum	Native Frangipani
Jacaranda mimosifolia	Jacaranda
Ligustrum species	Privet
Liquidamber species	Liquid Amber
Lophostemon confertus	Brush Box
Magnolia grandiflora	Bull Bay Magnolia
Melaleuca species (large)	Paperbarks
Melia azedarach	White Cedar
Palm species	Palm
Pinus species	Pine
Platanus species	Plane tree
Populus species	Poplar
Quercus species	Oak
Salix species	Willow
Schinus species	Peppercorn tree
Stenocarpus sinuatus	Queensland Firewheel tree
Syncarpia glomulifera	Turpentine
Syzygium species	Lilly Pilly or Bush Cherry
Tamarix aphylla	Athel Pine
Tilia species	Linden or Lime tree
Tipuana tipu	Racehorse tree
Ulmus species	Elm
Zelkova serrata	Japanese Elm
	Tall growing fruit and nut trees

Please note: most trees are unsuitable for planting under or near powerlines.